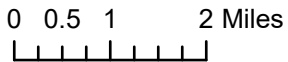


Soil Burn Severity 2024 Post Fire BAER Assessment Los Padres and Angeles National Forest

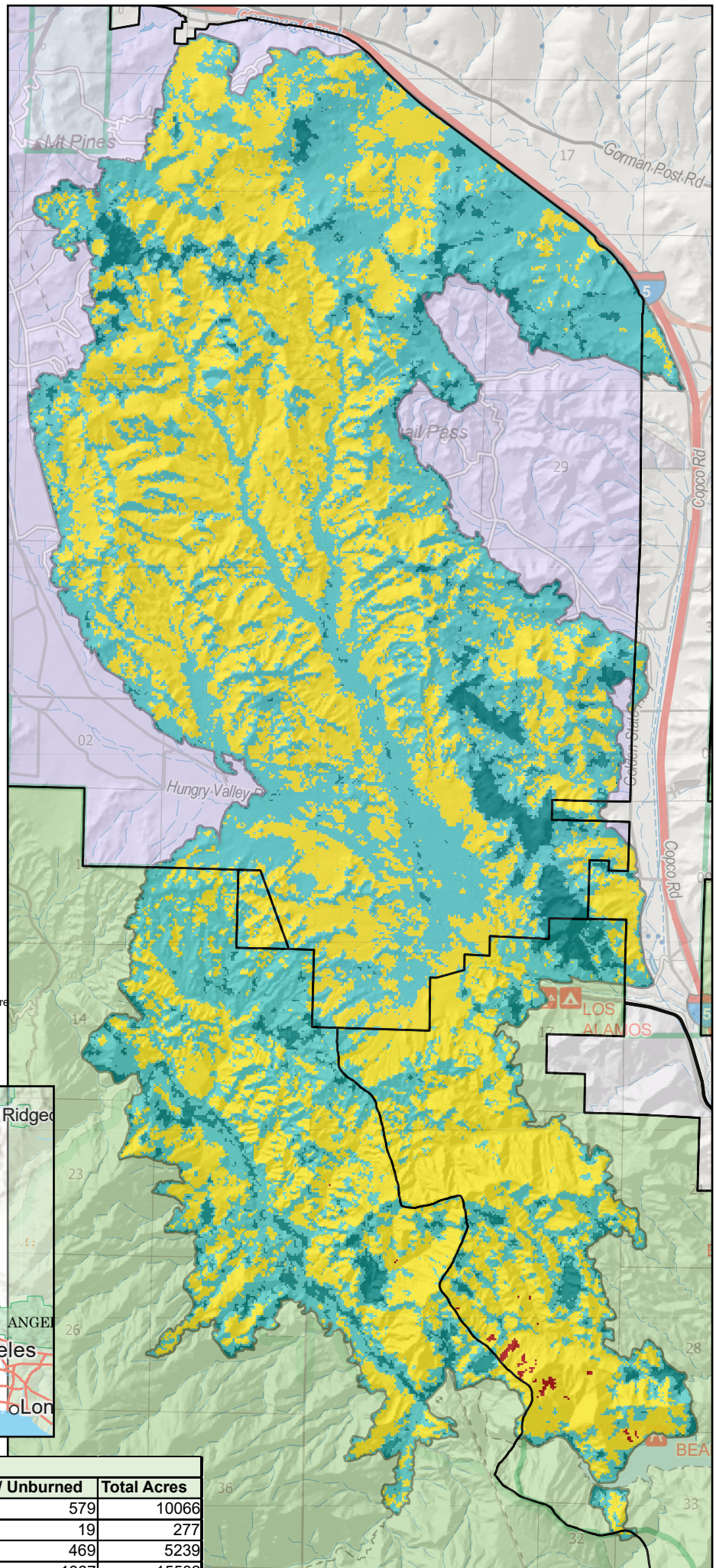


Soil Burn Severity

- Very Low or Unburned
- Low
- Moderate
- High



This product is a product of BAER rapid assessment. Further information concerning the accuracy and appropriate uses of this data may be obtained from the USDA Forest Service. The Forest Service, makes no warranty, expressed or implied, including the warranties of merchantability and fitness for a particular purpose, nor assumes any legal liability or responsibility for the accuracy, reliability, completeness or utility of these geospatial data, or for the improper or incorrect use of these geospatial data. These geospatial data and related maps or graphics are not legal documents and are not intended to be used as such. The data and maps may not be used to determine title, ownership, legal descriptions, boundaries, legal jurisdiction, or restrictions that may be in place on either public or private land. Natural hazards may or may not be depicted on the data and maps, and land users should exercise due caution. The data is dynamic and may change over time. The user is responsible to verify the limitations of the geospatial data and to use the data accordingly.



Soil Burn Severity					
Owner/Administrator	High	Low	Moderate	Very Low / Unburned	Total Acres
State		4859	4628	579	10066
Private		123	134	19	277
USFS	16	2087	2668	469	5239
Total Acres	16	7068	7430	1067	15582